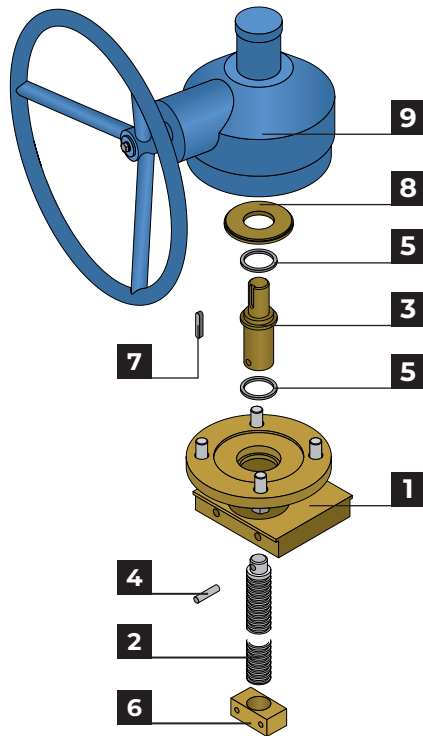
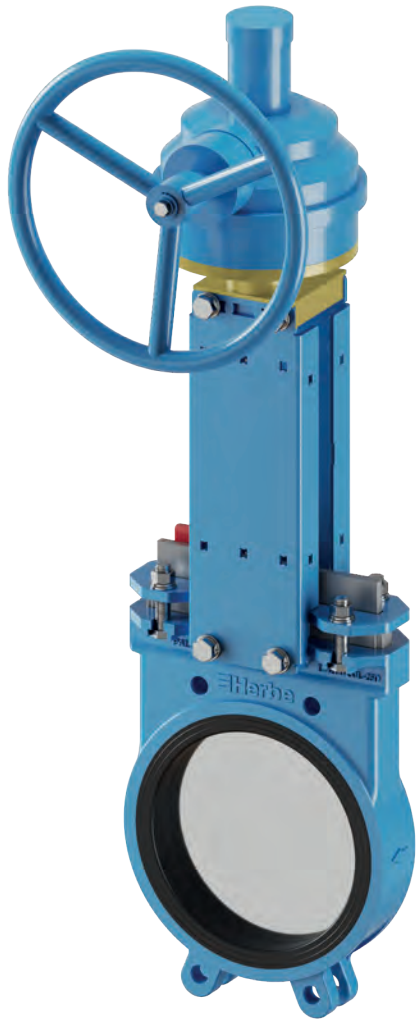


2.2.3. PAL-R

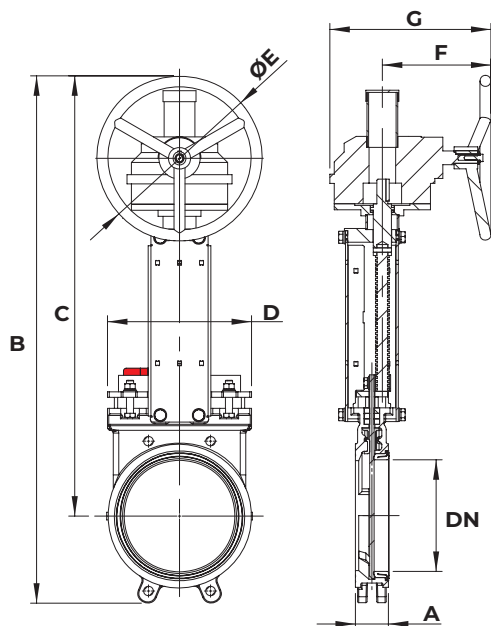


R. Manual reducer

Made from DN50 to DN600. For other diameters, consult our Technical Department.

Description	Material	Unit
1 Flange	Bichromated steel	1
2 Stem	AISI-303	1
3 End-shaft bushing	Bichromated F-114	1
4 Elastic pin	Steel	1
5 Washer	POM	2
6 Nut	Brass	1
7 Parallel key	Steel	1
8 Gear washer	Bichromated steel	1
9 Reducer	Cast iron	1

*Other materials available on request.



DN	A	B	C	D	ØE	F	G	Weight	Ps
50	40	619	559	145	300	197	270	17	10
65	40	631	565	160	300	197	270	18	10
80	50	677	587	172	300	197	270	19	10
100	50	725	622	194	300	197	270	20	10
125	50	789	671	184	300	197	270	24	10
150	60	846	716	211	300	197	270	26	10
200	60	959	801	262	300	197	293	50	10
250	70	1,083	888	316	300	197	293	63	10
300	70	1,293	1,062	375	450	217	313	77	6
350	96	1,358	1,145	423	450	217	313	106	6
400	100	1,552	1,298	507	450	288	402	134	6
450	100	1,685	1,396	579	450	288	402	173	5
500	110	1,996	1,650	618	650	288	409	216	4
600	110	2,218	1,846	743	650	288	429	279	3

Other diameters available on request

Assembly between PN10/Class150 flanges
DN Nominal diameter

Dimensions in mm
ØE Wheel diameter

Estimated weight in kg
Ps Nominal pressure in bar